

Anchor Lutheran School

8100 Arctic Blvd
(907) 522-3636 phone

Anchorage, AK 99518
(907) 522-3359 fax

Volume 30, Number 19

January 8, 2009

"...Fruit of the Spirit..." Galatians 5:22-23

Chapel Corner

Chapel Offerings

Weekly: \$ 61.17
YTD: \$ 926.44



Thank you, Mr. Corbie Cross, for speaking in Chapel today about the Fruits of the Spirit!

Parents, you are always welcome to join us for Chapel on Wednesdays at 9:10 am in the MPR.

Parent News



Easy \$\$ for ALS!

Office Max, Office Depot and PartyCrafts: These businesses offer spending rewards for Anchor. Ask the clerk to ring your purchases up under Anchor Lutheran School & we will be credited for the purchase amount!

Box Tops for Education & Campbell Labels for Education: Have you cleaned your drawers lately? We have two boxes in the Office for all of those box tops & labels floating around!

Aluminum Recycling: Drop off your aluminum cans at the Recycling Plant and have them credit your contribution to Anchor Lutheran's account!

~ calendar DATES ~

- 1/12 Read-A-Thon Begins
- 1/19 Martin Luther King, Jr. Day ~ NO K-8 CLASSES
~ CW by Reservation
- 1/19-23 ... Scholastic Book Fair
- 1/22 VIP Pizza Lunch Day ~ Spirit Day = Favorite Book Character
- 1/23 Family Fun / Game Night
- 1/29 Parent Council Meeting

From the Administrator:

Dear Parents and Students,

Welcome back to all the activities of the second semester of the school year. I hope you all had a most blessed Christmas and I pray that your New Year will also be full of God's richest blessings for you and your family. May the New Year be filled with happiness and special moments with your children!

Monday of next week marks the beginning of our annual Read-A-Thon which is a month long emphasis on reading. Information was sent home yesterday so parents please help your child set and achieve a realistic goal for their reading, but most importantly, please read with them. Parents of younger students remember to take time to read to them and create a special memory with your child. Help them discover the joy of a great story.

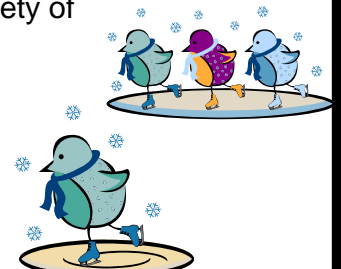
During the Read-A-Thon we are encouraging our students to use this opportunity to support a local food bank by collecting non-perishable food pledges for their reading efforts. This is a voluntary activity and there is a flyer attached to the Read-A-Thon material that gives you more information.

The school Geography Bee is tomorrow afternoon at 1:00 pm in the Multi-purpose Room. Students from grades five through eight will be participating in this event. We wish the entire group of participants well.

The Annual Book Fair will be held the week of January 19th. The Book Fair is sponsored by the students who will participate in the 2010 East Coast Heritage Trip. A wide variety of books will be for sale and purchases may be paid for in the school office.

Enjoy the warming(?) temperatures!

Mr. Brosz



GEOGRAPHY BEE!

Congratulations to the class representatives that will participate in our upcoming Geography Bee:

4th Grade: Ella & Sophie
5th Grade: Tyler, Bradley & Peter
6th Grade: Erin & Chettar
7th: Elaine & Nick
8th: Blake & Aaron



The Bee will be held tomorrow, Jan. 9th in the afternoon. Students compete to be Anchor's representative in the State Geography Bee in the spring. Parents are invited!

It's Coming! It's Coming!

Kids, dust off your boards and get ready for....

CHESS CLUB!

Sign-up going on NOW for Chess Club!
We begin *today*, Jan. 8 and run through Feb. 26.
Grades 2-8 may participate Thursdays from 3:30-4:30 pm.
All levels are welcome. Learn to play or tune up your skills!
Mrs. Josephson says to come join in on the fun!
Parent and or alumni help is appreciated!



Child Care *and* Child Watch

BBBRRRRR!

Some kids still do not bring all of their winter gear each day. Please remember to send winter gear with your child! Coats, hats, gloves, snow pants & boots are a must!

Colds, Flu, Fever!

Back to school and back to those icky bugs! At this time, the known 'bugs' floating around Anchor are: flu, bronchitis & sinus infections. If your child is ill, do not send them to school! If you are keeping your child home, please call the Office by 9:00 am to report their absence.



Volleyball!

Volleyball practice for grades 5-8 begins Friday, Jan. 9, and will be held Mon/Tues & Fri from 5:30-7:00 pm. Be sure to have a current physical on file & turn in a Permission to Participate form. Check the sports board for the forms. For further questions, see Mrs. Dirksen!



As you may have heard, our annual Read-A-Thon begins Monday, Jan. 12. We are all aware of the need for food drives to help those less fortunate in our city. This awareness includes our children; usually they ask you for food items to contribute. We would like to give them the opportunity to actually do something themselves to make a difference. It is a chance for them to show they care; what wonderful training for them later in life! This can be done by asking for contributions of non-perishable food items for the books or pages that they read, depending on their grade level.

Participation of individuals is voluntary; we believe that we can make a difference and that our families, friends, and co-workers would be willing to donate. One of our students and her Mom did this last year and the results were amazing! As a school...just imagine what can happen with your help! We hope that the enjoyment of reading is a reward in itself. Reluctant readers may find additional motivation in knowing that others will benefit because of their efforts!

Anchor Lutheran School is owned by the Lutheran School Association of Anchorage, which is affiliated with Anchorage Lutheran, Beautiful Savior Lutheran and Zion Lutheran Churches.

Anchorage Lutheran
272-5323

Sunday Service: 8:30 & 11:00 am
Sunday School: 9:45 am

Beautiful Savior Lutheran
522-3899

Sunday Service: 8:30 & 11:00 am
Sunday School: 9:45 am

Zion Lutheran
338-3838

Sunday Service: 8:30 & 11:00 am
Sunday School: 9:45 am